

## THE SCULPTED EYE WITH BIANCA

### STEP 1 OF 11

Apply primer in a medium shade over eyelids and brow bone to clarify skin texture and tone with soft, fluffy brush.

Prep+Prime Eye  
252 Large Shader Brush



### STEP 2 OF 11

Begin by blending a mid-toned matte taupe/sepia eye shadow through the crease of the eye. Starting on the outer corner of the eyes and on the lower lash line, build the eye shadow gradually, defining the contour of the eyes with a light touch. This will enhance the natural shape of the eye with a subtle effect.

■ Eye Shadow – Texture  
217 Blending Brush



### STEP 3 OF 11

Next, begin highlighting eyelids with a brighter tone of eye shadow. This could be opalescent or matte in texture. Use a brush that has a smaller, dense head. This will provide the necessary control when working with textures that shimmer especially.

■ Eye Shadow – All That Glitters  
272 Small Angled Shader



## STEP 4 OF 11

Apply the highlighting eye shadow with a stronger intensity on the inner corner of eyelids, this will open up eyes without having to use much product.

■ Eye Shadow – All That Glitters  
272 Small Angled Shader



## STEP 5 OF 11

Highlights may be added under brows, but should be kept matte, with little shine for the most natural appearance.

Prep+Prime Eye  
239 Eye Shading Brush



## STEP 6 OF 11

Curl lashes to open up the eyes.

Lash Curler



## STEP 7 OF 11

Apply one or two coats of mascara. The sculpted eye is beautiful in its simplicity, but paying close attention to details...such as lashes and brows, is imperative for a finished, polished effect.

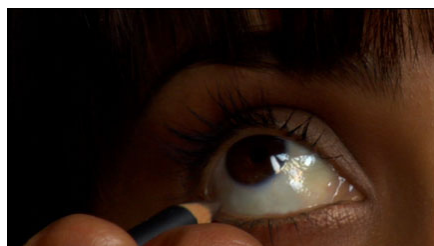
■ Plush Lash Mascara – Plushblack



## STEP 8 OF 11

Open up eyes further and make the eyes look more rounded by highlighting the lower lash line with a liner pencil.

■ Eye Kohl – Powersurge



## STEP 9 OF 11

Groom brows with a brow pencil to fill in gaps.

■ Eye Brows – Lingering



## STEP 10 OF 11

Apply brow gel to keep brow hairs in place and to create a polished look.

Brow Set – Clear



## STEP 11 OF 11

Warm up the crease to add intensity by using a warmer eye shadow.

Eye Shadow – Embark  
224 Tapered Blending Brush

